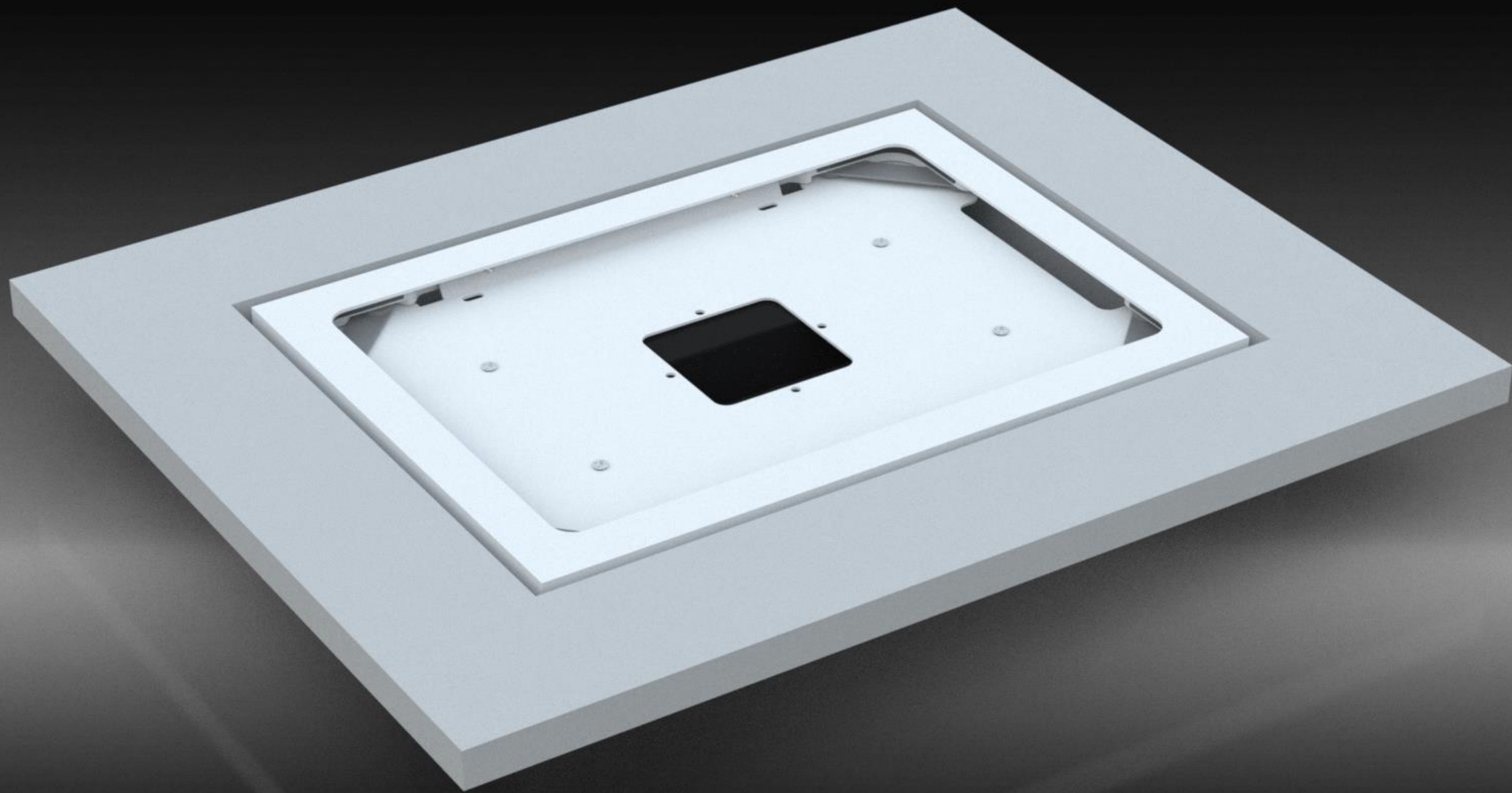


TENSE

TOP DESIGN SWITCHES

EYEWALL



DESIGN

The EYEWALL of TENSE Top Design Switches bvba is an elegant docking station for the iPad Air 2 and the iPad Pro 9.7. In order to perfectly match your INTENSITY switches, INFINITY room controller, SOCKET frames and MOTIVITY wall detector, the EYEWALL is made of the same high-quality metal materials.

The EYEWALL is created out of:

- Brushed/anodised Alu,
- Brushed/anodised Alu Black,
- Painted Alu White,
- Bronze,
- Bronze Light,
- Stainless Steel,
- Alu forgé,
- Gold,
- Brushed Gold,
- Chrome,
- Fer forgé.

TYPES

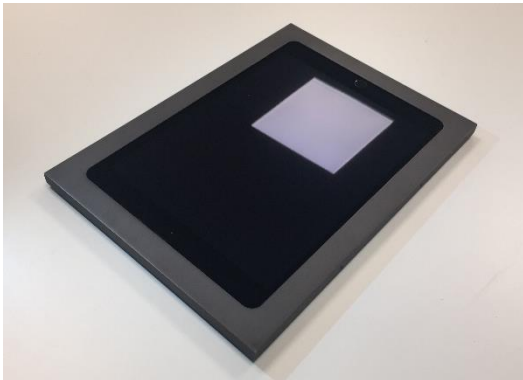
The EYEWALL of TENSE is available in three types:

- Wall-mounted (on the wall) – type 1,
- Flush-mounted without RGBW side LED – type 2,
- Flush-mounted with RGBW side LED – type 3.

Wall-mounted

Type 1:

- Frame
- Wall-Mounting Power Supply



Flush-mounted

Type 2:

- Flush-Mounting Box
- Frame
- Flush-Mounting Power Supply (without RGBW side LED)



Flush-mounting box



Type 3:

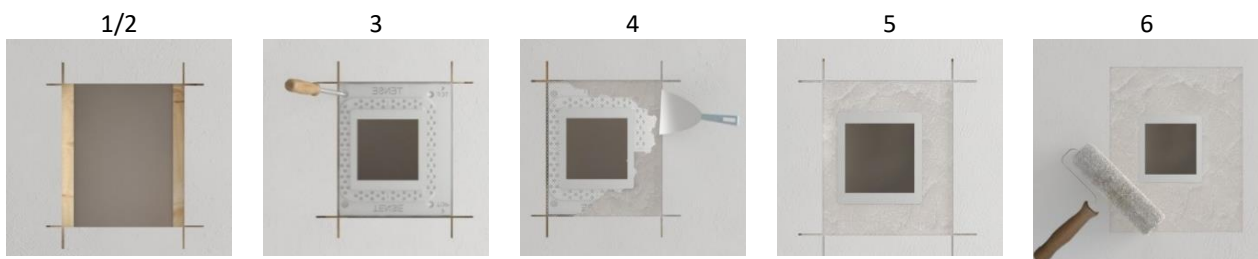
- Flush-Mounting Box
- Frame
- Flush-Mounting Power Supply + RGBW (with LED-frame)



HOW DOES IT WORK FOR THE FLUSH-MOUNTED TYPES?

PLASTERBOARD/GYPSUM BOARD

- 1 Make a hole in the wall of 392 mm x 318 mm with a depth of minimum 64 mm.
- 2 Install two wooden planks in the hole.
- 3 Screw the fixture on the wooden planks.
- 4 Add fibernet and plaster up to the rounded second level.
- 5 Grind with a sanding machine.
- 6 Paint the wall.
- 7 Install and connect the Power Supply.
- 8 Install the frame.



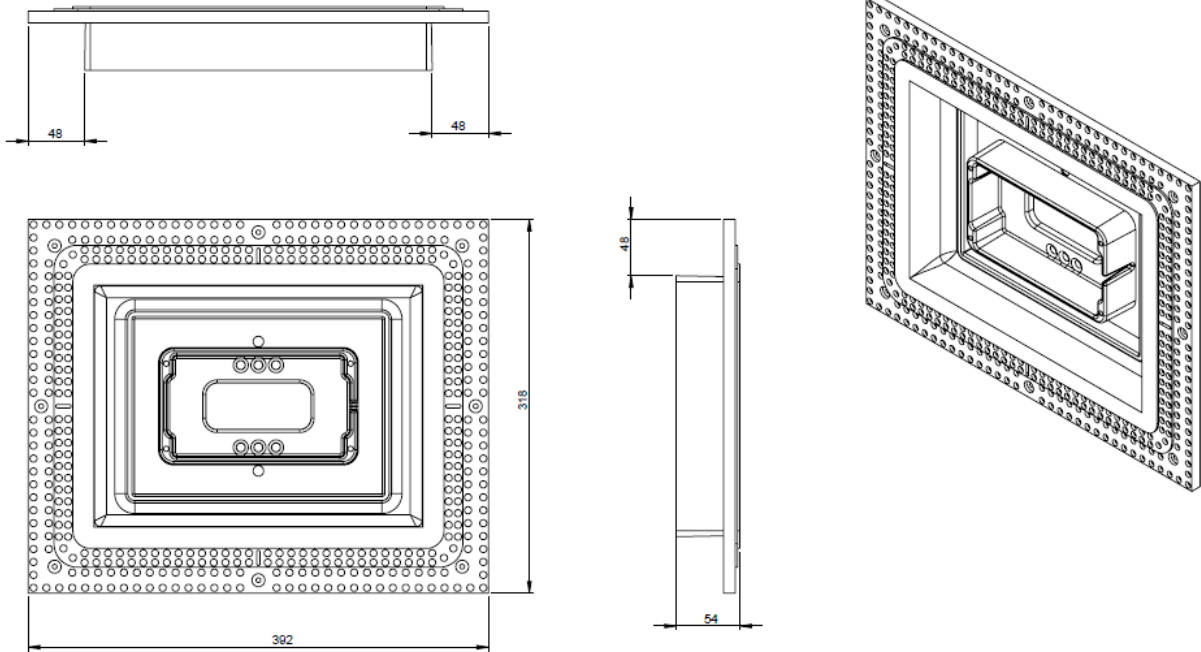
BRICK WALL

- 1 Make a hole in the brick wall of 296 mm x 222 mm with a depth of minimum 58 mm.
- 2 Place the composite fixture in the hole and screw the fixture in the wall.
- 3 Add fibernet and finish the wall with plaster up to the rounded second level.
- 4 Grind with a sanding machine.
- 5 Install and connect the Power Supply.
- 6 Install the frame.

DIMENSIONS

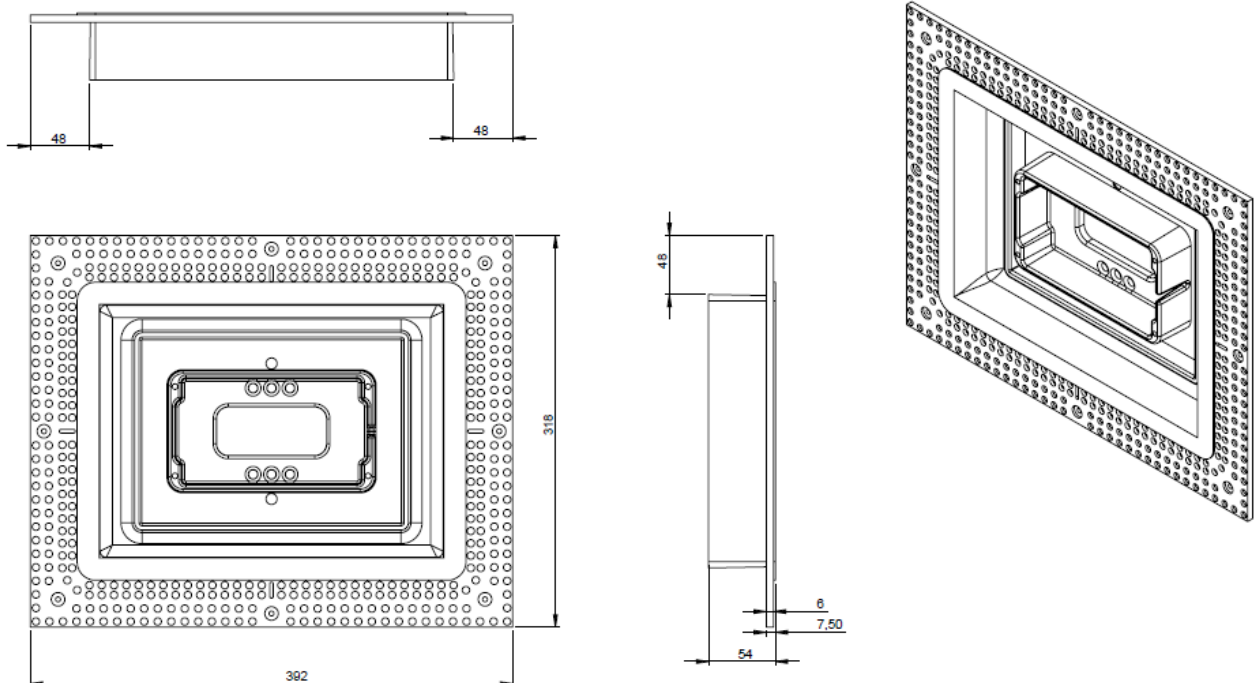
- Flush-mounting box plasterboard/gypsum board:

392 x 318 x 54 mm



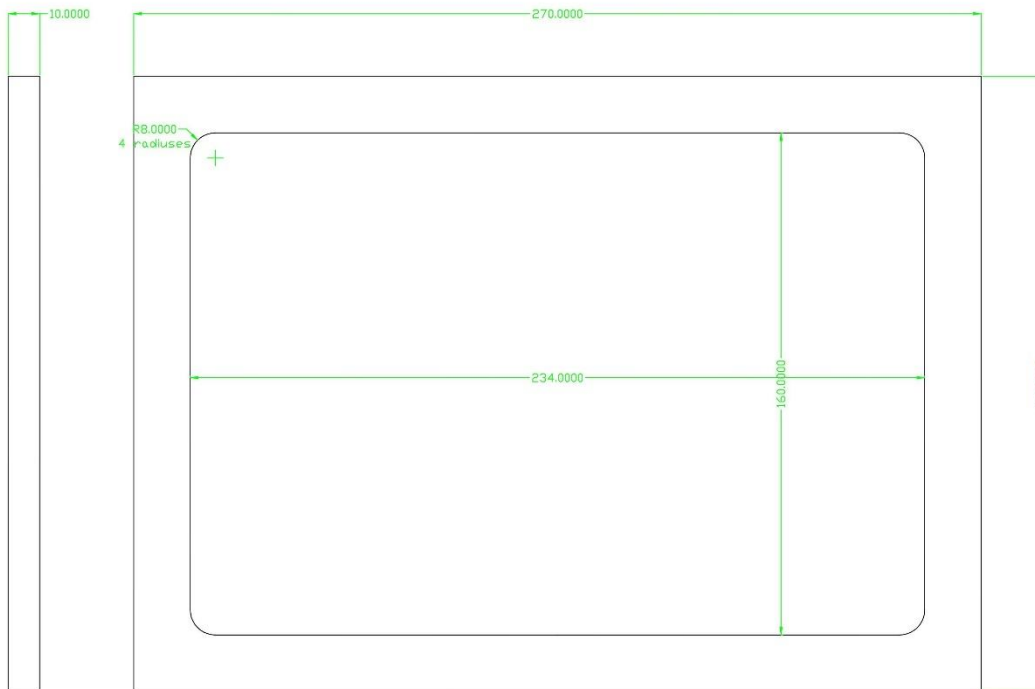
- Flush-mounting box brick wall:

392 x 318 x 54 mm



▪ **Frame:**

270 x 196 x 10 mm



ORDER CODES

Product	Material	Code
EYEWALL	Ipad Mini 2 / Mini 4 Alu (frame)	EYEM2M4A
EYEWALL	Ipad Mini 2 / Mini 4 Alu Black (frame)	EYEM2M4AB
EYEWALL	Ipad Mini 2 / Mini 4 Alu White (frame)	EYEM2M4AW
EYEWALL	Ipad Mini 2 / Mini 4 Bonze (frame)	EYEM2M4B
EYEWALL	Ipad Mini 2 / Mini 4 Bonze Light (frame)	EYEM2M4BL
EYEWALL	Ipad Mini 2 / Mini 4 Stainless Steel (frame)	EYEM2M4SS
EYEWALL	Ipad Mini 2 / Mini 4 Alu Forgé (frame)	EYEM2M4AF
EYEWALL	Ipad Mini 2 / Mini 4 Gold (frame)	EYEM2M4G
EYEWALL	Ipad Mini 2 / Mini 4 Brushed Gold (frame)	EYEM2M4BG
EYEWALL	Ipad Mini 2 / Mini 4 Fer Forgé (frame)	EYEM2M4FF
EYEWALL	Ipad Mini 2 / Mini 4 Chrome (frame)	EYEM2M4CH
EYEWALL	Ipad Mini 2 / Mini 4 Metal (special frame)	EYEM2M4MSP
EYEWALL	Ipad Mini 2 / Mini 4 Flush-mounting Box (Plasterboard)	EYEM2M4FMBPB
EYEWALL	Ipad Mini 2 / Mini 4 Flush-mounting Box (Brick Wall)	EYEM2M4FMBBW
EYEWALL	Ipad Mini 2 / Mini 4 Flush-mounting Power Supply + RGBW	EYEM2M4FMBPSR
EYEWALL	Ipad Mini 2 / Mini 4 Flush-mounting Power Supply	EYEM2M4FMBPS
EYEWALL	Ipad Mini 2 / Mini 4 Wall-mounting Power Supply	EYEM2M4WMPS
EYEWALL	Ipad Air 2 / Pro 9.7 Alu (frame)	EYEA2P97A
EYEWALL	Ipad Air 2 / Pro 9.7 Alu Black (frame)	EYEA2P97AB
EYEWALL	Ipad Air 2 / Pro 9.7 Alu White (frame)	EYEA2P97AW
EYEWALL	Ipad Air 2 / Pro 9.7 Bronze (frame)	EYEA2P97B

EYEWALL	Ipad Air 2 / Pro 9.7 Bronze Light (frame)	EYEA2P97BL
EYEWALL	Ipad Air 2 / Pro 9.7 Stainless Steel (frame)	EYEA2P97SS
EYEWALL	Ipad Air 2 / Pro 9.7 Alu Forgé (frame)	EYEA2P97AF
EYEWALL	Ipad Air 2 / Pro 9.7 Gold (frame)	EYEA2P97G
EYEWALL	Ipad Air 2 / Pro 9.7 Brushed Gold (frame)	EYEA2P97BG
EYEWALL	Ipad Air 2 / Pro 9.7 Fer Forgé (frame)	EYEA2P97FF
EYEWALL	Ipad Air 2 / Pro 9.7 Chrome (frame)	EYEA2P97CH
EYEWALL	Ipad Air 2 / Pro 9.7 Metal (special frame)	EYEA2P97MSP
EYEWALL	Ipad Air 2 / Pro 9.7 Flush-mounting Box (Plasterboard)	EYEA2P97FMBPB
EYEWALL	Ipad Air 2 / Pro 9.7 Flush-mounting Box (Brick Wall)	EYEA2P97FMBBW
EYEWALL	Ipad Air 2 / Pro 9.7 Flush-mounting Power Supply + RGBW	EYEA2P97FMBPSR
EYEWALL	Ipad Air 2 / Pro 9.7 Flush-mounting Power Supply	EYEA2P97FMBPS
EYEWALL	Ipad Air 2 / Pro 9.7 Wall-mounting Power Supply	EYEA2P97WMPS
EYEWALL	Ipad Pro 12.9 Alu (frame)	EYEP129A
EYEWALL	Ipad Pro 12.9 Alu Black (frame)	EYEP129AB
EYEWALL	Ipad Pro 12.9 Alu White (frame)	EYEP129AW
EYEWALL	Ipad Pro 12.9 Bonze (frame)	EYEP129B
EYEWALL	Ipad Pro 12.9 Bonze Light (frame)	EYEP129BL
EYEWALL	Ipad Pro 12.9 Stainless Steel (frame)	EYEP129SS
EYEWALL	Ipad Pro 12.9 Alu Forgé (frame)	EYEP129AF
EYEWALL	Ipad Pro 12.9 Gold (frame)	EYEP129G
EYEWALL	Ipad Pro 12.9 Brushed Gold (frame)	EYEP129BG
EYEWALL	Ipad Pro 12.9 Fer Forgé (frame)	EYEP129FF
EYEWALL	Ipad Pro 12.9 Chrome (frame)	EYEP129CH
EYEWALL	Ipad Pro 12.9 Metal (special frame)	EYEP129MSP
EYEWALL	Ipad Pro 12.9 Flush-mounting Box (Plasterboard)	EYEP129FMBPB
EYEWALL	Ipad Pro 12.9 Flush-mounting Box (Brick Wall)	EYEP129FMBBW
EYEWALL	Ipad Pro 12.9 Flush-mounting Power Supply + RGBW	EYEP129FMBPSR
EYEWALL	Ipad Pro 12.9 Flush-mounting Power Supply	EYEP129FMBPS
EYEWALL	Ipad Pro 12.9 Wall-mounting Power Supply	EYEP129WMPS